

# newsletter

"Wynkefeld The Saxon held honor and fee, ere William The Norman came over the sea"  
... Ancient Suffolk England Rhyme

Summer, 1987 Vol. I, No. 1

## Our First Newsletter

# WFS off and running...

This is our first official newsletter. We are proud of it and find we have much more material than space. We sort out the most timely or appropriate and save the rest for a later issue.

Our thanks go to Ken Wingfield from Arizona, who supplied the artistic masthead for the WFS publication. Ken is a professional artist and did this for the society. We are pleased and hope you are, too.

It is our intent to make it a quality publication that will be kept as a record by each family member.

Much of your dues go into the publication of the WFS newsletter. Should you have suggestions, comments and articles, please submit them to the address shown elsewhere in this issue. Of course, we can't guarantee that what you send in will be used, as space may be a problem, but depending on interest, general appeal and practicability, we will do our best. Comments, suggestions and criticisms are encouraged.

The Wingfield Family Society was officially organized on May

1, 1987 in Ashland, Virginia. Wilsie Wingfield Carr, organizer, brought a bundle of plans for the 146 Founding Members to mull over. Enthusiasm abounded as the members contributed numerous ideas and challenges for the new society. Many are reflected in this newsletter.

### Elections in '88

During the year the organizational process will continue under steering committees. Officers and directors will be elected at the next meeting in Richmond in 1988.

### Keep Your Newsletters

Note we have an issue price of \$4.00 for additional copies or for non-members. We will print very few extra copies.

We urge you to keep this in a binder. As you can see the letter has places for a three hole punch. If you will punch the holes and place in a 3 ring binder, it will keep your WFS Newsletters from getting lost and always in a neat available location for easy reference or whatever.

Looking into the past of other family associations, without exceptions their first, and other early publications, became very valuable as time goes on.

dragons pried open the corn cribs to feed their horses.

In his raid through Hanover County in 1864, Civil War Yankee General Sheridan ransacked the house from top to bottom.

This pre Revolutionary home is now the residence of Dr. and Mrs. William Wingfield. Dr. Wingfield is the eighth generation of the Wingfield family to occupy the home.

The 146 founding members of the WFS visited Marl Ridge on the first meeting in Ashland in May, 1987.

## Next meeting

Mark your calendars. . . WFS will have our second meeting in Richmond, Virginia on May 20-22, 1988. The hotel is the Sheraton Park South, Bunky Wingfield from Memphis negotiated some excellent rates for us.

Some exciting things are in store for you and we are looking at some interesting guest speakers. A tour is planned to Jamestown, where Capt. Edward Maria Wingfield was the first President. There will be the fellowship of meeting cousins and of course, our exchange of heritage information.

### Setting the Record Straight

As you probably know, this ancestor did not get a fair shake and history does not treat him kindly. Hopefully we will be able to correct some of these misconceptions and put Capt. John Smith, who emerged the hero, in proper perspective.

More details will be out soon, but in the meantime, save these dates as you will certainly want to come.

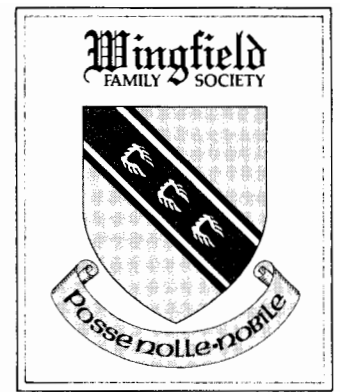
## Incorporation

The WFS is indebted to member Eugene McCaul, an attorney in Mechanicsville, Virginia who has incorporated our Society as a non-profit Corporation.

Since the WFS is still in the organizational phase, official officers and directors have not been elected, but will be at our next meeting in Richmond.

This is the first step in our organizational process that we hope one day will allow us to have an archive and possibly even a tax exempt foundation.

**PUBLISHED BY:**  
Wingfield Family Society  
301 Belleview Blvd.,  
Belleair, FL 34616,  
for its members  
**Single Issue Cost \$4.00**



## First Wingfield home



MARL RIDGE...

Thomas Wingfield arrived at York River, Virginia (now Hanover) in 1680. A visual legacy of his presence is represented in property, it is believed he owned, known as Marl Ridge, and still occupied by a Wingfield.

Marl Ridge is located on State Road 54 two miles west of Hanover Court House. It was given its name when Marl deposits were found under the soil and used to lime the land.

Thomas Wingfield owned land in the area that is now Hanover County as early as 1704. His son John (1695-1748), lived at Marl

Ridge. The exact date of the erection of his house is believed to be about 1714.

### Built to Last

The house with lateral entries and paired front and back rooms, was originally a story and half high and its only light upstairs was through two small windows in each end. It was raised to two stories in 1905. The distinctive double chimneys are original.

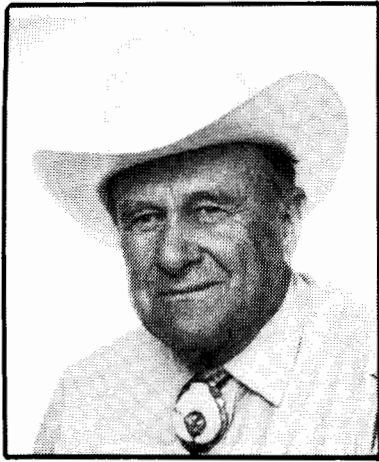
During the Revolutionary War, the British Colonel Banastre Tarleton is said to have camped under the still standing black walnut tree in the yard and his

---

## WFS MEMBER PROFILE -

### GALE WINGFIELD

from Flagstaff Ariz Sun



GALE WINGFIELD...

Catching up with Gale Wingfield is "catch as catch can." The 70 year old cowboy "entrepreneur" is always digging his spurs into new ventures. In addition to running a real estate business in Verde Valley, Gale caters camp-style barbecues for a variety of events.

"Corralled" at his adobe home in Rimrock, Wingfield was between deals when he talked to this native of Camp Verde and a descendent of the family that pioneered the area. Gale presents a John Wayne image with cowboy hat tilted back, jovial grin and gravelly voice.

Gale Wingfield is not unknown to Northern Arizona residents and visitors. He and his wife Audry, along with their children, owned and operated the Mormon Lake Lodge from 1963 to 1979.

"It was lots of work but it was fun," Gale recalls of the lodge. "It was a family operation," adds Audry. "We worked all the time, It's a whole town out there."

While at Mormon Lake Lodge, the Wingfields became widely acclaimed for their steaks and barbecue cook-outs. They also started dog sledding activities and an annual jackpot roping rodeo.

Gale has worked on ranches for as long as he can remember. "I did cowboy-ing, farming and cooking," he remembers. "I used to do quite a few pack trips, too, just for the fun of it."

"I've always enjoyed being with people and just doing things for groups of people," says Gale Wingfield, explaining how he got into the restaurant and catering business.

After moving from Mormon Lake, the

Wingfield's bought another restaurant. The Sonoita Steakhouse in Sonoita, Arizona. There the couple also got interested in Spanish architecture and after moving back to Rimrock, they designed and built the adobe home where they currently live.

Constructed of 5,000 adobe blocks and featuring stamped Mexican tile floors, the home sits near Dry Beaver Creek on several acres of land. Green lawns and terraced gardens were achieved by clearing out solid mesquite and utilizing natural spring water.

"We made the adobe blocks out of dirt from the river bank," Gale stated. "We started building the home in 1981 and moved in Christmas of 1983. It's a comfortable house to live in." Although Gale has his own real estate company, Wingfield Land, headquartered a few miles from his home, he still enjoys catering. "It is mostly a hobby now. I do it for fund raisers, charitable organizations and a variety of events."

Wingfield's barbecue cook outs are presented in a true-to-the-West fashion. He has constructed a "covered cook wagon" which he pulls behind his truck to the cook-out location. The wagon houses a cooker which Gale designed himself.

"It's a smoker process of barbecuing. I can prepare whole meat in about five to six hours and I've served up to 600 people," Gale states.

The cooker is constructed of 1/4 inch boiler plate and is loaded and unloaded by a system of wheels and pulleys. Gale uses mesquite and oak wood for cooking and comments that an advantage of the cooker is that he can do a lot of cooking with a small amount of wood.

His daughter, Sally Randall from Pine, Arizona and two of her friends, Karen Randall and Maggie Peace, often accompany Gale on his catering adventures. They help prepare the accompaniments to the meat -pinto beans, salsa, cole slaw and cobbler for dessert.

Flagstaff residents recently had the opportunity to taste Gale's barbecue at the Coconino Center for the Arts, in connection with the opening of the western art show "Trappings of the American West." Gale cooked 200 lbs of meat for the Saturday event that drew 300 people.

Gale does not have exact recipes to offer WFS members since he makes everything from scratch and to taste. But he did offer the following hints.

For his famous Wingfield barbecue sauce, he uses the following ingredients:

Ketchup base, hickory smoke seasoning, worcestershire sauce, apricot nectar, garlic and other seasonings. He mixes these to taste. He cooks his pinto beans with onions and bacon ends and cracked black pepper and then seasons to taste.

And that's about all of his secret he would reveal. But, one thing is for sure - Gale Wingfield's widely acclaimed barbecue isn't just the coincidental mixture of ingredients. Its the result of 35 years of western cooking experience.

Maybe when we have our WFS meeting in Arizona in 1989, Gale will show us how its done.

Gale was the first paid member of the Wingfield Family Society. At the meeting in Ashland, when it was announced the annual dues would be \$25., he immediately gave his check to Rose Mary Wingfield Smith, our membership chairman, giving him the distinction of being, "numero uno."

---

## GENEALOGY

As the WFS gets organized, we hope to put much of the available family data onto computers. This will be a long and ongoing project that will require the cooperation and patience of all members, plus a lot of work by some dedicated volunteers.

In some respects we are "ploughing new ground," doing something, we believe, no other family society has done before. Each member will be given a Profile Sheet and Pedigree chart, with specific instructions. Completed forms will be reviewed and forwarded to one of three computer centers that will enter the data.

Each name will be given a reference number and all relevant facts entered. As the information grows, ultimately more and more individuals and branches will merge and interface revealing common relationships not known before. At least that is what we hope. Be patient, we may have to work out some of the glitches as we go along. It won't be simple.

New members will be given a packet with instructions should that want to contribute family information to our WFS Data Bank, and are interested in learning more about their heritage. There will be a "Genealogy" Feature about this and other interesting facts about the family's recent and distant past.

There will be a opportunity to send in queries to this newsletter regarding information you lack, but may be in someone else's file. Space will limit the inquiries to a few lines, but remember this newsletter will target only Wingfield family members, certainly the most logical source of information. More information later.

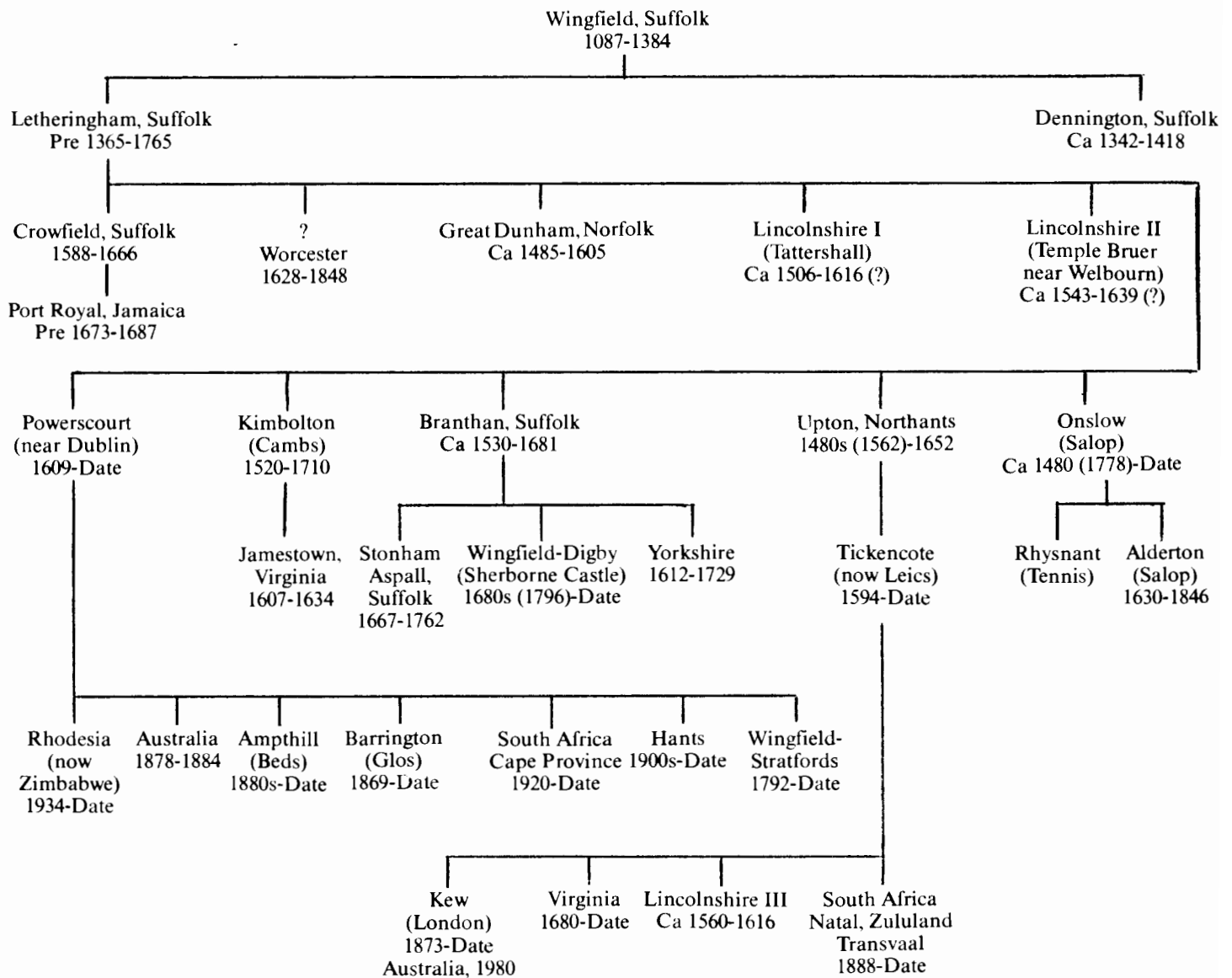
**LIST OF SUFFOLK WINGFIELD FAMILY BRANCHES  
SHOWING PRINCIPAL CADET BRANCHES & DATES TRACED**

It is fitting that in the first WFS Newsletter, we publish the origin of the Wingfield family and how the various branches evolved within and outside England. Although most of the USA Wingfields seem to be from the Tickencote line and Thomas, 1680, there are other Wingfields that migrated before and after from other branches. If you have not established your English connection, this maybe a guide and goal of your heri-



tage research. The chart was prepared by Jocelyn Wingfield of the Powerscourt Branch, now living in London.

The chart shows the division of the various branches of Wingfields around the World. This gives general migration patterns, but is not absolute. There are also Wingfields & Winfields originating from the Derbyshire Villages of North and South Wingfield, recorded from the 14th century.



## Local family reunions

Over the years, Wingfields have been meeting in localized reunions in many places. Although we may not be aware of them all, we have found several and hope to publicize them as we learn more details.

Members of the WFS are asked to notify us if you know of other reunions not listed here, or if the information is not correct or complete. Our family is extensive and has spread all over the world, so it is only natural that the local family members keep in touch at least annually.

June—Sunday mid-month. Held annually about 20 miles south Arkadelphia, Arkansas. 1988 will be 50th anniversary of this reunion. Held jointly with the Clarks. Contact Martha Dowell, Russellville, Arkansas 72801.

June—New Mexico. Has been held since 1975 at the home of Orpha Wingfield in Tularosa, NM. Contact Bill Wingfield, P.O. Box 1304, Roswell, NM 88201.

August—Arizona. Near Phoenix early in the month. Well attended by the Arizona clan with food and exchange of stories. Contact Elva Wingfield, 8165 Via de la Escuela, Scottsdale, AZ 85258.



ARKANSAS REUNION: Vance Wingfield, Ft. Worth, Texas, Troyce and Joseph Tuller from Baton Rouge, LA.

### Echoes down the ages

For our first meeting in Ashland, VA, we published a booklet entitled, "Echoes Down the Ages," written by Jocelyn Wingfield from London who was our guest speaker. The 100 copies we had were an almost immediate sellout after Jocelyn's speech.

It contained a teaser to a book he is writing concerning the history of the Wingfields and the text of his speech. The price was \$5.

Family members who did not get one before, and want one, can do so by sending \$7.50 to the address on this newsletter. The price covers printing a smaller volume, handling and postage. Send your check, print your name and address and note, "Echoes Down the Ages" at 301 Belleview Blvd., Belleair, FL 34616.

## Special tour to England May 22-30, 1988

Dates are set and an itinerary selected for our first tour to the significant sites in England steeped in Wingfield history. The tour will depart immediately following our next meeting in Richmond on May 22, 1988. Tentatively, the flight will leave from nearby Washington-Dulles Airport, non-stop for London.

Jocelyn Wingfield will try to be on the tour for as much time as he can devote. For those that met Jocelyn in Ashland, know he is fascinatingly interesting with his in depth knowledge of the family, especially in England.

### Inviting Sarah Ferguson (HRH, Duchess of York)

Briefly, the tour will spend 2 nights in London. There will be a special service at St. Benet's with the presentation of a John Wingfield York Herald Banner for permanent display. We are inviting Sarah Ferguson, HRH the Duchess of York (who is a Wingfield descendant) to attend this presentation. We will visit Wimbledon and the Wingfield Room. Then go out into the country to see our ancestors as they made their mark in history.

A swing to visit Orford Castle where Sir Henry Wingfield was governor in the 15th Century. On to Letheringham and Eaton to see some brasses, especially of Sir John Wingfield (died 1390). We will see Wingfield College, Church and Wingfield Castle, most famous within our family. A stop will be made in East Harling to see a magnificent stained glass window depicting Sir Robert Wingfield (died 1481).

A morning visit to Tickencote. Thomas Wingfield the first permanent transplant to America came from here, then to Burghley House, a magnificent mansion. This was the home of the Cecil family. Elizabeth Cecil married Robert Wingfield. Our private coach will drive to Kimbolton, now a boy's school but at one time owned by the Wingfields and interned Kathrine of Aragon, while Henry VIII hanky panky with Anne Boleyn. A look at Stoney, the home of Capt. Edward Maria Wingfield the first president of the Jamestown Colony in

Virginia. A stop is planned in Cambridge as many, many Wingfields were educated here and perhaps see a demonstration of brass rubbing.

On the 9th day, May 30, we will fly home. Those who want can stay over, provided arrangements made in advance.

The tour is now being priced by a ground operator in London, and we are still making the special arrangements for specific visits as indicated. We cannot take reservations yet, however, since we are limiting this to 40 persons (one motorcoach), we will take registrations for priority listing in the order received. When we have the final prices and itinerary, at that time we will ask for a deposit. Those registering will receive a tentative itinerary.

Contact the WFS, 301 Belleview Blvd., Belleair, FL 34616 if interested.



WILSIE CARR with Vicar Payne-Hawkins discussing details of Wingfield tour at St. Benet's, London.

## Republishing rare Wingfield book

The very rare copies of the, *Munuments to the Ancient Saxon Family of Wingfield*, are almost 100 years old, being published in 1894 in England. All heritage researchers know about this book and a few even own a copy. There is a copy at the Wingfield College in Wingfield, Suffolk, one in the library in Dublin, a copy in the Library of Congress and one at Duke University. I'm sure there are more, but these are the ones we know of for sure. Original copies of this book are not available at any price. Through age they have deteriorated and most are so fragile it is intimidating to read.

Why is this book so important? It was written by the 7th Viscount of Powerscourt (a Wingfield descendant) in 1894, and has the most complete pedigree chart of the Wingfields in England from 1087 to 1894. Fourteen years of research went into this publication and it remains the major source reference to the ancient English line of Wingfields.

Our Society has taken on the task of

republishing this fabulous book for the benefit of our members and some libraries. This is being done by our Ways and Means Committee and is an enormous undertaking. WFS members Susan and Terry Cavanagh of Durham, NC have spent countless hours in preparation details to get this valuable book published.

Once we have determined the costs involved, each WFS member will be notified on a pre-subscription basis, to determine their interest in purchasing a copy. If the interest is there in the numbers required, we will ask for payment and print the appropriate copies. You can be assured this will be the most interesting and informative book you will have in your home.

### Wingfield Castle has been sold

Wingfield Castle (located in Wingfield, Suffolk), home of Katherine Wingfield, Countess of Suffolk, 1384 has been sold this July to a London businessman, Mr. Paul Ruddock for a sum rumored to be in excess of \$1.5 million. His plans for the castle are not known at this time.